

SLIDE-LOK®

Garage & Storage Cabinets

**READ ALL INSTRUCTIONS BEFORE YOU BEGIN.
DO NOT JUMP AHEAD OF ANY STEP.**

If this is your first time assembling a SLIDE-LOK cabinet, you may find it helpful to first assemble the cabinet without gluing to give yourself the opportunity to become familiar with the assembly process of SLIDE-LOK storage cabinets. All components will slide together without force or effort if the dovetails are lined up properly. Do not force. If force or exertion is necessary, pieces are not aligned correctly. Take apart and start over. Be sure to glue all joints at time of assembly. Allow glue to completely dry before installing.

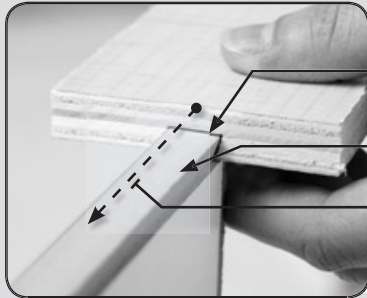


B2431-21

Assembly Instructions

slide-lok.com/assembly/B2431-21

The Patented Dovetail Assembly System



Female Dovetail
Glue this edge

Male Dovetail

Slide Together
Slide Female dovetail into Male dovetail

Quick And Easy Assembly

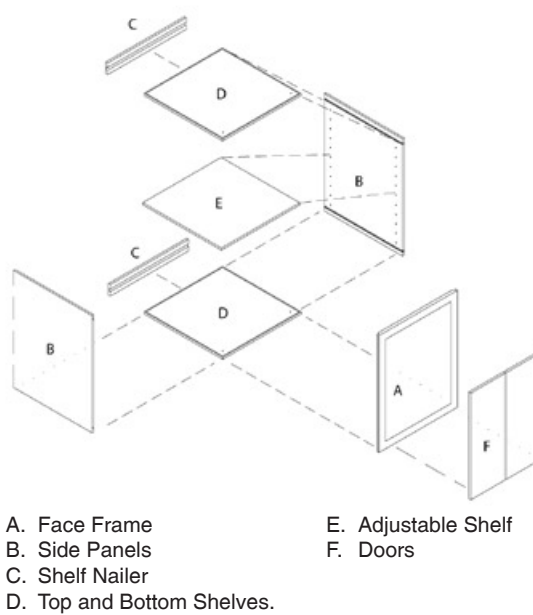
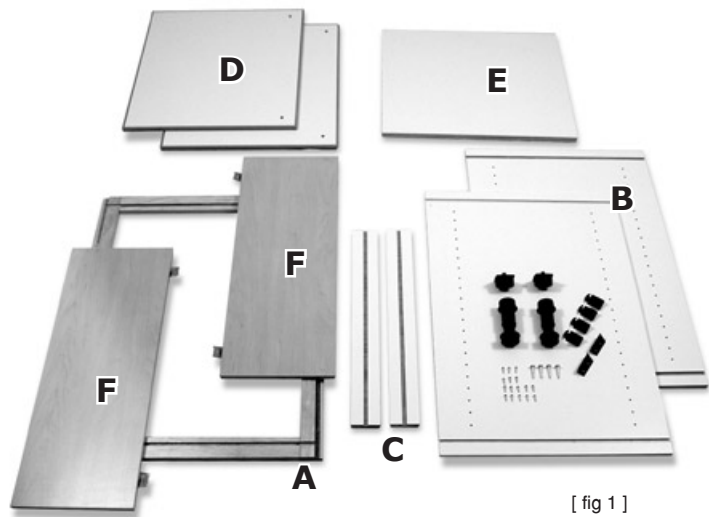
All components will slide together without force or effort if the dovetails are lined up properly. If force or exertion is necessary, pieces are not aligned correctly.



**Simply Slide A Into B
It's That Easy!**

Step 1. - Identify all Pieces

Remove cabinet parts from box and identify all pieces as pictured in fig. 1.



- (2) Adjustable legs & doweled tops
- (2) Corner brackets
- (4) Shelf clips
- (4) 1 1/2" Door screws
- (4) Clear bumpers
- (4) 2 1/2" Black installation screws
- (16) 1/2" Silver screws for adj. Legs, corner brackets & shelf clips
- (3) 1 1/4" Black screws for joining cabinets together



Step 2. - Attaching Top and Bottom Shelves



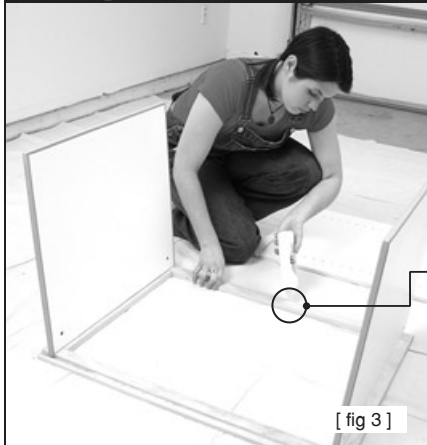
Place face frame "A" face down on a smooth surface to prevent scratching (you may use the box it came in). Glue all female dovetail joints as shown in fig. 2. Slide shelves "D" into position while aligning as in fig. 2A & 2B with holes closest to the face frame.



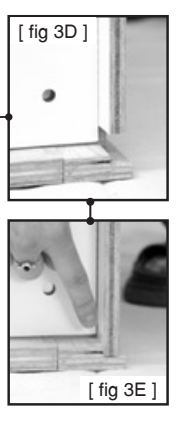
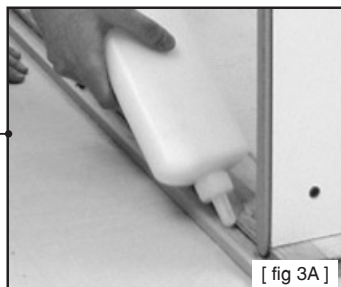
NOTE:
A general purpose carpenters wood glue is recommended for assembly. Apply a 1/16" bead of glue to the entire length of the female Dovetail joint



Step 3. - Attaching the First Side Panel



Glue rabbet joint as in fig. 3A. Dovetail joint and side panel as in fig. 3B. Slide one side panel "B" into place while aligning dovetails on top and bottom of both shelves (see fig. 3C). Make sure to Start all dovetails simultaneously, then slide side panel into rabbet joint as in fig. 3D & 3E.



DO NOT SLIDE OTHER SIDE PANEL ON AT THIS TIME.

Step 4. - Attaching Top and Bottom Nailers



Glue the female dovetail On the nailer see fig. 4. Slide one nailer onto the top shelf (fig. 4A) and one nailer onto the bottom shelf (fig. 4B). Make sure they touch the side panel.

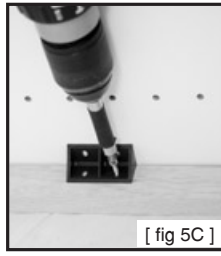


Remember to follow the steps exactly as shown. Do not jump ahead, or you'll get tangled up!

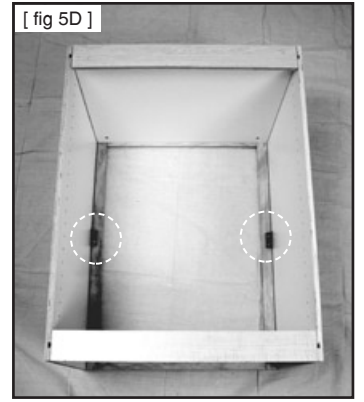
Step 5. - Attach Second Side Panel and Installing Corner Blocks



Repeat STEP 3 for the other side panel see fig. 5 and 5A. Take the corner blocks and 1/2" screws and attach to face frame and side panels (see fig. 5B and 5C) in the middle of the cabinet. (see fig. 5D)



Attach corner blocks to both side of the cabinet, see figure 5D



Step 6. - Attaching Cabinet Legs



Assemble adjustable leg by attaching the dowel head to the leg (fig. 6, 6A, and 6B). Take the assembled leg and insert dowel into the hole provided as in fig. 6A. Use 1/2" screws and screw leg into bottom of cabinet to keep it firmly in place (fig. 6C and 6D). Let glue dry



Before Proceeding to the next step, let glue dry completely.

Step 7. - Fasten Cabinet to Wall



After glue is dry locate studs in wall (fig. 7A). Attach cabinet to wall using 2 1/2" screws. (See fig. 7)

NOTE:
It is important that the cabinet is set flush to the wall and fastened to wall studs for stability and strength.



Step 8. - Hang Cabinet Doors



To hang doors, use the 1 1/2" silver screws. Hold door up so the door hinge hole lines up with the pre-drilled hole in the face frame. Screw in the hinge so the doors are level across the top and flush in the front. Take clear bumpers and attach as in fig. 8B, to top and bottom of doors.



NOTE:
Hinge is 6 way adjustable (up, down, in out, back and forth) fig. 8A.

In and out
Up and Down
Back and Forth

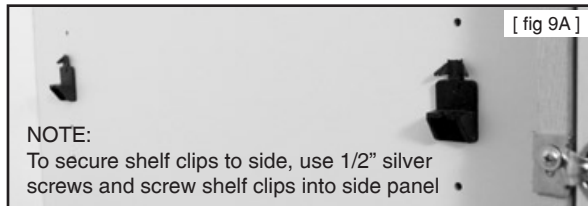


Step 9. - Install Adjustable Shelf



To install shelf, use all 4 shelf clips. Push shelf clip into holes, as in fig. 9, on side panel. Make sure the clips are level in front, back and on the other side panel, see fig. 9A

Angle shelf and slide into cabinet, setting one side of shelf on top of shelf clip, see fig. 9B. Let shelf drop onto the other side and snap into place, see fig. 9C. To secure screw into underside of shelf as in Fig. 9D.



NOTE:
To secure shelf clips to side, use 1/2" silver screws and screw shelf clips into side panel



Step 10. - Congratulations!



CONGRATULATIONS!
You have just finished assembling and installing a SLIDE-LOK cabinet.

SLIDE-LOK
Garage & Storage Cabinets



Design Your Own SLIDE-LOK Storage Solution

Visit Jack's Design Center, an interactive SLIDE-LOK Storage System design tool, which will enable you to design you own SLIDE-LOK Storage system online

Jack's Design Center simplifies the process of designing your own SLIDE-LOK Storage

Solution with features such as user dimensions, a parts list generator and the ability to print your SLIDE-LOK creation, making ordering your next SLIDE-LOK Storage System easier than ever.

NOTE: - Attaching Two or More Cabinets

When putting two cabinets together, hold both face frames flush, see fig. 10A.

Take a 1 1/4" screw and insert it behind the face frame, into the side panel of one cabinet through the other cabinet's side panel, screwing it tightly together see figures 10B & 10C. Do this at the top, middle and bottom of the cabinet.

